

## Last Call: Lace Up for Hope! Join Us at the 51<sup>st</sup> Annual Walk for the Hungry and Homeless!



Calling all heroes of hope! Time is running out, and we need **YOU** to join us for our **51<sup>st</sup> Annual Walk for the Hungry and Homeless!** Grab your walking shoes, your friends, and family, and meet us for this year's event:

**Saturday, October 5, 2024**

8 a.m. Registration/Check-in \* 9 a.m. Walk Begins  
Claremont Colleges Services (101 S. Mills Ave, Claremont)

Together, we'll take powerful steps toward ending hunger and homelessness in our community.

### Why Walk?

Your participation helps Inland Valley Hope Partners raise the critical funds needed to provide food, shelter, and hope to our neighbors in need. By taking part in our 5K Walk, you're becoming a hero for the families and individuals relying on our services.

### Event Highlights:

- **Hero Cuffs for Every Registered Walker:** As a special thank you, all registered walkers will receive a set of Hope Partners' hero cuffs—your badge of honor for joining the fight!
- **Fun for All Ages:** Enjoy free popcorn and balloons, face painting, live music, and other family-friendly activities that make this event a perfect outing for everyone.



### Multiply Your Impact:

Want to take your participation to the next level? Create a personal fundraising page and rally your friends, family, co-workers, and faith community to support this cause. Every dollar raised goes directly toward providing food and shelter for those who need it most. Imagine the difference we can make together!

### Register Today:

Visit [www.InlandValleyHopePartners.org](http://www.InlandValleyHopePartners.org) to register and start fundraising. For hard-copy materials or additional resources, please contact Misa Martinez, Director of Development and Communication, at 909-622-3806, x105, or email [misam@inlandvalleyhopepartners.org](mailto:misam@inlandvalleyhopepartners.org).

## Calendar of Events/ Activities

**Adopt A Family.....August—December 2024**  
**Walk for the Hungry & Homeless.....October 5, 2024**  
**Newsletter Mailing.....October 15, 2024**

**Call or email office for bold events (need volunteers)!**  
909-622-3806, x108;

[vcoordinator@inlandvalleyhopepartners.org](mailto:vcoordinator@inlandvalleyhopepartners.org)

[www.inlandvalleyhopepartners.org](http://www.inlandvalleyhopepartners.org)

## INLAND VALLEY HOPE PARTNERS

### BOARD OF DIRECTORS

Board Chair  
Ron Bolding  
*Pilgrim Place*

Board Vice Chair  
Dr. Donna Bernard  
*Retired School  
Superintendent*

Treasurer  
Rosalia Ulloa  
*Pacific Premier Bank*

Secretary  
Judith B. Mussatto, OFS  
*Retired Bookkeeper*

Members  
Peggy Constantine  
*Retired Educator*

Gabriel DeLuna  
*Trilogy Financial*

Jamie Gibson  
*JAAG Financial Services*

Dr. Massie Hazegh  
*State Farm*

Dain Pankratz  
*Boyd Caton Group*

Ehmandah Ramsey  
*She Stories*



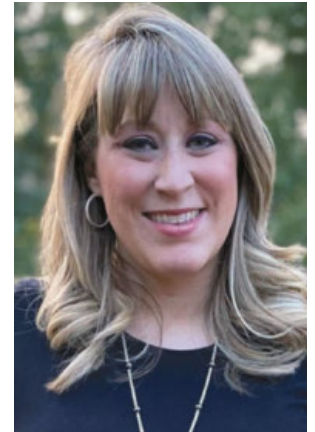
### Who We Are ...

Celebrating over 50 years of commitment, Inland Valley Hope Partners serves over 75,000 men, women and children each year through "Our House" family residential shelter; and Rapid Re-Housing; BETA, SOVA, Claremont, San Dimas and South Pomona food pantries; and the Pomona Farmers' Market throughout 13 communities including Chino, Chino Hills, Claremont, Diamond Bar, La Verne, Montclair, Mt. Baldy, Ontario, Pomona, Rancho Cucamonga, San Dimas, Upland, and Walnut. The shelter houses five families for up to 90 days. The food pantries distribute five days worth of food per person to no and low income families. Clients may come once every 30 days. The Farmers Market operates every Saturday morning and accepts WIC and EBT cards. Begun in 1968 as the Pomona Council of Churches, today the non-profit is a collaboration of faith communities, businesses, community groups, and individuals who care about their neighbors.

### Blessings ...

Hope Partners marked the conclusion of our 2023/24 Fiscal Year with our Annual Meeting on June 26<sup>th</sup>. The meeting was open to all partners in our mission to feed the hungry and shelter the homeless and included a brief report on the agency's recent accomplishments, financial health and upcoming goals. New Board officers and members were also elected at the meeting.

**Ron Bolding**, current President/CEO of Pilgrim Place in Claremont, has returned for his third and final year as Board Chair. **Dr. Donna Bernard** is also returning as our Board's Vice Chair while **Judith Mussatto** and **Rosalio Ulloa** are assuming the roles of Secretary and Treasurer respectively.



New (but not unfamiliar!) faces were also elected to our Board of Directors. They are **Peggy Constantine**, retired educator (fun fact: Peggy was actually MY kindergarten teacher!); **Jamie Gibson**, Enrolled Agent of JAAG Financial Services; and **Rosalio Ulloa**, 1st VP / Sr. Portfolio Manager at Pacific Premier Bank. We are excited to see what fresh insights and expertise they will each bring to the governance of Inland Valley Hope Partners, and we hope to introduce them more to you in the coming months. Members **Gabriel DeLuna**, **Dr. Massie Hazegh**, **Dain Pankratz**, and **Ehmandah Ramsey** will remain on as members of our board for the 24/25 fiscal year, as well.

We also utilized the Annual Meeting as an opportunity to thank our outgoing Board Treasurer **Rev. Mike Fronk** for his stellar job leading the Finance Committee for the past seven years. He is a vast wealth of institutional knowledge and will be greatly missed on the board. Long-time board members **Tony Soto**, **Katherine Hage**, and **Craig Chisolm** also rolled off the board. We are grateful to them for their service and friendship during their terms.

Thank you to all who attended the Annual Meeting, and my deepest gratitude to all our Board Members for your service.

Blessings!

*Kami Grosvenor*

President/CEO

INLAND VALLEY  
HOPE PARTNERS  
1753 N. Park Avenue,  
Pomona, Ca 91768  
909.622.3806  
FAX 909.622.0484  
[info@inlandvalleyhopepartners.org](mailto:info@inlandvalleyhopepartners.org)  
[www.InlandValleyHopePartners.org](http://www.InlandValleyHopePartners.org)

ADMINISTRATION/HOUSING  
OFFICE HOURS:  
Monday - Thursday 8:00 am-6:00

# Calling All Santa's Helpers

## Adopt A Family for the 2024 Holiday Season!

Dust off your pointy ears and elf costumes because it's time for Santa's helpers to get to work! As we enter the fall season, Inland Valley Hope Partners' annual Adopt A Family Program is gearing up for another year of holiday magic. This year, we are aiming to adopt over 100 families who are struggling to provide the basic necessities of food and housing for their children. With your help, these families can experience the joy and warmth of the holiday season.

### What is the Adopt A Family Program?

The Adopt A Family Program connects generous community members like you with families in need. Each family submits a "wish list" that includes essential items and special requests to make the holiday season memorable for their children. Whether it's planning a festive family dinner or wrapping gifts to place under the tree, your support makes a huge difference.

### How Does It Work?

- **Adopt a Family:** We have wish lists for families of various sizes and compositions ready for adoption. Simply let us know your preferences (such as a family of four or a family with teenagers), and we'll match you with a family that closely aligns with your criteria.
- **Receive a Family Profile:** Once matched, you'll receive a profile that includes details about the family along with wish lists and clothing sizes for each child. Use this information to guide your shopping and make the holidays brighter for your adopted family.
- **Spread the Joy:** You can adopt a family as an individual or involve your family, friends, coworkers, faith community, or any other group to make an even bigger impact.

### Why Participate?

Participating in the Adopt A Family Program is a rewarding and heartwarming experience for both donors and recipient families. It's an opportunity to give back and make the holiday season special for local families who are going through tough times. Your generosity ensures that parents can create magical holiday moments for their children, moments that many of us often take for granted.

### How You Can Help:

To make a difference this holiday season, or to learn more about the Adopt A Family Program, please contact Misa Martinez, Director of Development & Communication, at 909-622-3806, x105, or via email at [misam@inlandvalleyhopepartners.org](mailto:misam@inlandvalleyhopepartners.org). Your support can bring joy, hope, and a bit of holiday magic to a family in need.



## INLAND VALLEY HOPE PARTNERS

### STAFF

#### President/CEO

Kami Grosvenor, x101

[kamig@](mailto:kamig@inlandvalleyhopepartners.org)

[inlandvalleyhopepartners.org](http://inlandvalleyhopepartners.org)

#### Office/Fiscal Administrator

Yvonne West, x102

[yvonnew@](mailto:yvonnew@inlandvalleyhopepartners.org)

[inlandvalleyhopepartners.org](http://inlandvalleyhopepartners.org)

#### Fiscal/Grants Administration Assistant

Bryce Gardner, x112

[bryceg@](mailto:bryceg@inlandvalleyhopepartners.org)

[inlandvalleyhopepartners.org](http://inlandvalleyhopepartners.org)

#### Director of Development & Communication

Misa Martinez, x105

[misam@](mailto:misam@inlandvalleyhopepartners.org)

[inlandvalleyhopepartners.org](http://inlandvalleyhopepartners.org)

#### Development & Volunteer Relations Associate

#### Grant Writer

Kay Brand, x104

[kayb@](mailto:kayb@inlandvalleyhopepartners.org)

[inlandvalleyhopepartners.org](http://inlandvalleyhopepartners.org)

#### Case Manager

Karen Abram, x106

[karena@](mailto:karena@inlandvalleyhopepartners.org)

[inlandvalleyhopepartners.org](http://inlandvalleyhopepartners.org)

#### Emergency Housing Coordinator

#### Food Security Program Manager

Isaac Vega, x201

[isaacv@](mailto:isaacv@inlandvalleyhopepartners.org)

[inlandvalleyhopepartners.org](http://inlandvalleyhopepartners.org)

#### Case Manager

Kristina Alvarez, x204

[kristinaa@](mailto:kristinaa@inlandvalleyhopepartners.org)

[inlandvalleyhopepartners.org](http://inlandvalleyhopepartners.org)

#### Food Security Program Associate

Claudia Wheelley, x301

[claudian@](mailto:claudian@inlandvalleyhopepartners.org)

[inlandvalleyhopepartners.org](http://inlandvalleyhopepartners.org)

#### Farmers' Market Manager (contract)

Harry Brown-Hiegel,  
310-621-0336

[h.brownhiegel@ca.rr.com](mailto:h.brownhiegel@ca.rr.com)

## Alternative Ways to Support the Walk for the Hungry and Homeless!

Don't forget, Hope Partners is offering our supporters three POW-erful ways to participate in this year's **Walk for the Hungry and Homeless!** See if any of these ideas are a good fit for you and your team:

**Present a Community Fair Booth** - Community groups are invited to sponsor a booth to showcase their brand or services. This is a great opportunity for fellow non-profits, faith communities, service clubs, schools, and even businesses to market themselves to those in attendance. Space is **free**, but all booths **must** include an activity or craft for children in attendance to enjoy. Sales of any item on-site will not be permitted at this time.

**Sponsor A Route Sign** - A route sign is a 2 X 3' sign featuring your own customized message that will be displayed along the route of the 5K Walk for the Hungry and Homeless. Priced at **\$250**, a route sign is a wonderful way to draw attention to your message and support the children and families Hope Partners serves. Your donation will help provide **10** local families with enough staple foods to sustain them for about a week!

**Host a Hunger Action Month Food Drive** - Did you know that September is Hunger Action Month? Hope Partners has created the perfect Food Drive calendar to help you be a Superhero in the fight against hunger and homelessness for the whole month leading up to the Walk. Simply organize a food drive following the themes outlined on our website and then bring your collected food items with you to the Walk for the Hungry and Homeless on Saturday, October 5<sup>th</sup>!

For more information on any of these opportunities, please visit our website at [www.InlandValleyHopePartners.org](http://www.InlandValleyHopePartners.org) or contact Misa Martinez at 909.622.3806, x105 or [misam@inlandvalleyhopepartners.org](mailto:misam@inlandvalleyhopepartners.org).

## "Our House" Family Shelter Success Story

For seven long years, Ebony and her daughter went from shelter to shelter, battling the trials of homelessness and struggling to find stability amidst a sea of hardship. The weight of domestic violence from her past had left deep scars, and without any family to turn to, Ebony found herself at a crossroads. Despite her self-doubt and fear, Ebony knew she deserved a better life and reached out to Inland Valley Hope Partners for help.

Here, at the "Our House" Family Shelter, Ebony finally began her journey of healing. The road has not been easy—therapy was challenging, and progress felt slow at first. However, with the support of our case manager and a newfound determination, she began to see a glimmer of hope. The shelter provided her a safe haven and vital access to essential resources and programs. Ebony resumed her schooling and secured a well-paying job. Ebony's daughter, who had struggled with the instability of their situation, began to flourish once more. Back in therapy and feeling safe and secure, she excelled academically and embraced her teenage years with renewed energy. The transformation has been profound.

With the aid of Hope Partners' Rapid Re-Housing Program, Ebony and her daughter recently moved into a new apartment in San Bernardino County, marking a significant milestone in their journey from homelessness to stability. Ebony shares that she is truly grateful for the people who have believed in her and helped her get to this new chapter in her life—one filled with hope, stability, and the promise of a brighter future!

## Other Ways to Give

Do you designate your **Ralphs rewards**? Please consider designating them to Hope Partners. That way you can help us feed the hungry by buying your own groceries! Simply visit [www.ralphs.com](http://www.ralphs.com). Once logged into your Ralphs account, you can search for INLAND VALLEY HOPE PARTNERS either by name or by our Non-Profit Organization number **WG044** and then click Enroll. New users will need to create an account which requires some basic information, a valid email address, and a rewards card.

**Matching gifts** is a form of corporate philanthropy which allows companies to match their employees' donations to nonprofits. Companies will match their employees' donations at a 1:1, 2:1, or even 3:1 ratio, effectively maximizing the impact of a single eligible donation. Your HR Dept. will typically be able to assist you access your company's matching gifts program.



# Help Keep Our Unhoused Neighbors Warm and Cared for This Fall

As September rolls in, the days are getting shorter, and the nights are growing colder. For our unhoused neighbors, the cooler fall weather brings additional challenges. Inland Valley Hope Partners is calling on our compassionate community to help us provide essential comfort and care during this time by donating hygiene kits, snack kits, and blankets.

## How You Can Help:

- Hygiene Kits: Include travel-sized toiletries like soap, shampoo, toothpaste, toothbrushes, deodorant, and hand sanitizers.
- Snack Kits: Fill them with non-perishable, easy-to-eat items such as granola bars, nuts, dried fruit, and bottled water.
- Blankets: New or gently used blankets can provide much-needed warmth on chilly nights.

Your donations go a long way in providing dignity and relief to those who are struggling. Let's come together to support our unhoused neighbors and make sure they have the essentials to stay warm and comfortable as we transition into the colder months.

## Where to Donate:

Drop off your donations at our administration office in Pomona or contact us at 909-622-3806, x105 for more information. Your generosity makes a difference, and together, we can bring warmth and hope to those in need.



## Our Chino Food Distribution Has a New Location!

Our monthly food distribution in the City of Chino has moved! Consecrated Bible Church will be continuing their partnership with us at their new home at **13971 Ramona Ave., Suite A in Chino**. The distribution will still take place on the 3rd Saturday of the month beginning at 10 a.m. New location, same great service! For more information, contact our Food Security Program at 909-622-3806.



**We Love Our  
Volunteers**

## Get Involved with Our Mission!

Are you looking for a way to make a direct impact in your community? We need your time and skills! Inland Valley Hope Partners is seeking volunteers to assist with operations at our food pantry locations and to help us prepare and mail newsletters to our supporters. Volunteering with us is not just about giving back; it's about growing, learning, and connecting with your community.

If you wish to volunteer, please contact our Development team at [misam@inlandvalleyhopepartners.org](mailto:misam@inlandvalleyhopepartners.org) or (909) 622-3896, x105 to learn more about our volunteer opportunities and to fill out a volunteer application. Every hour you donate brings great relief and support to those in need. Whether through donations or volunteering, your involvement is crucial. Join us in making a difference today and see the direct impact of your generosity in the lives of our neighbors!

# August Donors

## Partners (\$1,000.00 to \$1,000,000.00)

Anonymous  
Wendy Bayer  
Kaiser Permanente Financial Services  
Maria Lai  
Judith Maciariello  
Morgan Stanley Gift Fund

## Associates (\$500.00 to \$999.99)

Jacob, Jr. & Ann Bach  
James and Linda Bonn  
Claremont Presbyterian Church  
Compassion Church of the Foothills  
Bruce and Laura Corigliano  
CrossPoint Christian Reformed Church  
Jim & Marcia Flock  
Derry Seaton and Jeanne Hamilton  
La Verne Heights Presbyterian Church  
Louis & Joy Shaup

## Pace Setters (\$250.00 to \$499.99)

Gerald & Berkley Davis  
Eric Malstrom  
Richard & Elaine Newton  
Northminster Presbyterian Church  
Dain Pankratz  
Smart & Final Charitable Foundation  
Eugene & Nancy Smith  
Jess & Marion Swick  
Upland Christian Church  
Jesse & Hope Vela  
A. Christine Willis

## Contributors (\$100.00 to \$249.99)

Judith Aboufares  
Monica R. Awad  
William & Francine Baker  
Jerry & Anna Bedford  
Robert C Benza  
Sharonda Bishop - Bishop

Consulting  
Bonnie Busenberg  
Barbara Coates  
Priscilla Constantine  
Diane Deal  
Robert & Carole Dyer  
Sharon Eazell  
W. Brian Ebersole  
Michael & Emily Fay  
First United Methodist Church - Ontario  
Hank Fung  
Ms Linda Gunter  
Harriett Hartshorn  
Susan Herndon - Signs by Susan  
Mika Ikeda  
George & Alice Kerner - Kerner Family Trust  
Noreen Kistner  
Linda & Robert Liebing  
Jack & Christine Meek  
Ellen Polamero  
Theodore and Carol Powl  
Larry & Jeanine Robertson  
Rock of the Foothills Lutheran Church  
Mary Tennant and Rodolfo

Aguirre  
Timothy and Neva Root  
Eileen Senner  
Leon Silberberger  
Sally A. Simmel  
James Spears  
Bryan Speed - Speed & Associates CPAs  
John Stamp  
Suzette Stetzer  
Elise & Dave Tubbs  
Jess and Susan Villa  
Ted & Wytske Visser  
Dwight Vogel  
William & Joanne Wagoner  
Mary E Weis  
Max and Marilyn Williams

## Explorers (\$50.00-\$99.99)

Mary Barnes  
Patricia A. Beswick  
Margo Boss  
Jim Craig  
Fernanda De La O

John Denham  
Tad Dennis  
Jean Denton  
Janet Edgar  
Marcia Ellison  
Carol Fishburn  
R. Lewis Fry  
Hallie Dell Quinn Missionary Society of Primm Tabernacle A.M.E. Church  
Judy & Dan Hele  
Paula Hui  
Roger Johnson  
Rita Kent  
Patricia Light  
Jennifer Locke  
Noel & Irma Nazareno  
Timothy Nelson  
Bonnie and Mel Opotowsky  
Ms M. Eileen Prendergast  
Mary Beth & Rick Rogers  
Richard and Carol Schieber  
Daryl Smith  
Joan N. Stock  
David Ward

## Others (\$0.01- \$49.99)

Eman Abohebeish  
Natalie Brown  
Marilyn Brunger  
Marilyn Eng  
Kenneth Frank  
Jim and Ann Fry  
Patricia Hardy  
Rose Heredia  
John Howland  
Brenda Keith  
Robert and Elaine Klitgaard  
David Lutz  
Barbara MacKenzie  
Laura and Sean Mulroy  
Jean W Perry  
Pomona Fellowship Church of the Brethren  
Deborah Pruitt  
Oliver Varnes Jr.  
Elisabeth Walker  
Gene & Yvonne West

## In Memory Of

Mary Ball Williams  
By: *Elisabeth Walker*

Mary V. Ball  
By: *Elisabeth Walker*

Harry Brunger  
By: *Marilyn Brunger*

Tim Constantine (in honor of David Constantine & Chanda Betourney's wedding)  
By: *Mika Ikeda*

Robert Galloway's Birthday  
By: *Eric Malstrom*

A.J. Lai  
By: *Maria Lai*

Doug MacKenzie  
By: *Barbara MacKenzie*

Carol J. Varnes  
By: *Oliver Varnes*

Linda Vogel  
By: *Dwight Vogel*

## In Honor Of

Rhonda Barnes  
By: *Mary Barnes*

Carolyn Loper  
By: *Jerry & Anna Bedford*

Planned gifts provide a meaningful way of making an impact on Hope Partners' future while maximizing your philanthropic and financial goals.

For more information on planned giving opportunities, give us a call at 909-622-3806.

# FRANTZ CLEANERS

622-2513 • 1490 N. GAREY

Same Day Service  
ALL DRY-CLEANING DONE ON PREMISES  
Alterations • Drapery Cleaning  
Wedding Gown Specialist  
10% DISCOUNT WITH COUPON



**Geoff Hamill** DRE #00997900  
Broker Associate, CRS, SRS, GRI, SRES, GREEN  
#1 Claremont Sales & Listings  
Top 1% Realtors in the USA  
Direct: 909.621.0500 • Geoff@GeoffHamill.com  
GeoffHamill.com • WSSIR.com  
*Extraordinary Representation Since 1988*



Wheeler Steffen

Sotheby's INTERNATIONAL REALTY



## LET'S GROW YOUR BUSINESS

Place Your Ad Here  
and Support Our Parish!

**CONTACT ME**  
**Stephanie Church**

Schurch@4LPi.com  
(800) 950-9952 x7880

## DOES YOUR NONPROFIT ORGANIZATION NEED A NEWSLETTER?



Engaging, ad-supported print and digital newsletters to reach your community.



Scan to contact us!

Visit [lpicomunities.com](http://lpicomunities.com)

## World Mission Sunday October 20th, 2024

GO AND INVITE EVERYONE to the banquet (MAT. 22:8)



TEXT "MISSIONS24" TO 44384  
to Give now

[WWW.ONEFAMILYINMISSION.ORG/WMS](http://WWW.ONEFAMILYINMISSION.ORG/WMS)

## ADT-Monitored Home Security

Get 24-Hour Protection From a Name You Can Trust

- Burglary
- Flood Detection
- Fire Safety
- Carbon Monoxide



SafeStreets

833-287-3502

MEMORY CARE AT THE RAUCH HOMES

FEELS LIKE HOME

Unique Home-like environment  
Certification as a Montessori Inspired Lifestyle® Community  
Low resident-to-staff ratio  
Person-centered care

CALL TODAY (909) 399-5504

Pilgrim Place, 625 Mayflower Rd, Claremont, CA 91711  
[www.pilgrimplace.org](http://www.pilgrimplace.org)

COAR 226, 2254 197607628, ENG4950000284

PILGRIM PLACE

# NEW SMILE



## TEETH-IN-A-DAY

DENTAL IMPLANT CENTERS

COMPLETE NEW SET OF NEW TEETH IN A SINGLE VISIT

## ALL-ON-4®

MINIMIZES SURGICAL COMPLEXITY

## ZYGOMATIC IMPLANTS

A SECOND CHANCE AT GETTING PERMANENT TEETH

Scan for more information about Orabell and the science behind it



## CONNECT WITH US

[www.orabell dentalimplants.com](http://www.orabell dentalimplants.com)  
Van Nuys | West Covina  
818 - 404 - 9389



For ad info, call 1-800-950-9952 • [www.lpicommunities.com](http://www.lpicommunities.com)

Inland Valley Hope Partners, Pomona, CA

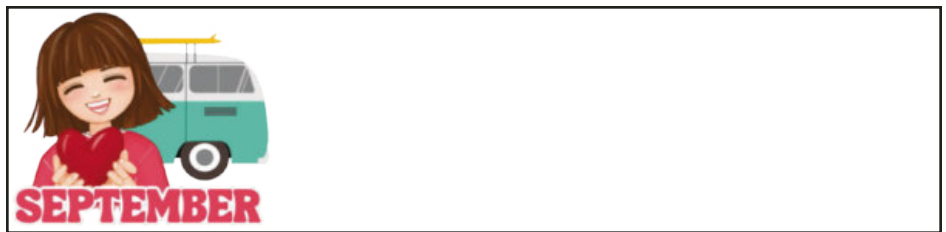
A 4C 05-1845



PO BOX 2572, Pomona, CA 91769-2572  
 Voice: 909.622.3806 \* Fax: 909.622.0484  
 E-mail: [info@InlandValleyHopePartners.org](mailto:info@InlandValleyHopePartners.org)  
 Website: [www.InlandValleyHopePartners.org](http://www.InlandValleyHopePartners.org)

Return Service Requested

Non Profit Org.  
 U.S. Postage  
 PAID  
 Permit No. 134  
 San Dimas, CA  
 91773



## Gift-In-Kind Donations for August

### Admin/Our House

Alex Lomeli  
 Bob Mitchell  
 Claremont United Church of Christ  
 Delta Kappa Gamma Beta Mu  
 Chapter  
 First Christian Church - Pomona  
 Lorette Verolugo  
 Paula Frederick  
 Robin Majors  
 Safelite Auto Glass

### Beta

Claremont Presbyterian Church  
 Good Shepherd Lutheran Church  
 La Verne Church of the Brethren  
 Monte Vista Unitarian  
 Universalist Congregation  
 Pilgrim Place - Claremont  
 Pomona Fellowship Church of the  
 Brethren

Purpose Church  
 St. Paul's Episcopal Church

### Claremont

City of Claremont  
 Connie Elliot

### San Dimas

Bench  
 House of Joy  
 Jeff Gerry  
 Judith Oschsner  
 San Dimas Senior Bingo  
 San Dimas United Methodist Church

### Sova

Cecilia Trucking  
 CS Beef Packers  
 Donna Chadwick  
 Erik Castaneda  
 Kaiser Permanente Ontario Campus

### KTJ

La Verne Heights Presbyterian  
 Church  
 Lisa Linford  
 Mathaun Transport  
 Williamette Egg Farms

### Evergreen

Community Partners 4 Innovation

