

2024 Appreciation Luncheon: We Love Our Volunteers!

Held in celebration of Volunteer Appreciation Month, April's special event recognized the invaluable contributions of our volunteers, whose dedication fuels our mission to feed the hungry and shelter the unhoused.

This year's luncheon was inspiring as we acknowledged the extraordinary efforts of several standout volunteers with the "Volunteer of the Year" awards:



Tom Jung



Janet Smith



Jackie Metter



Daniel Hernandez



Consecrated Bible Church



Cal Poly Pomona

- Tom Jung from our Beta Food Pantry, whose relentless hard work ensures that no family goes hungry.
- Janet Smith from our Housing & Administration, whose story uplifts those going through hardships.
- Jackie Metter of our SOVA Food Pantry, who has demonstrated commitment and care in her service.
- Daniel Hernandez from our Farmers Market, who brings positive enthusiasm and hard work to our program.

The celebration also recognized our "Partners of the Year": **Consecrated Bible Church**, recognized for its unwavering commitment to our mission for more than a decade and **Cal Poly Pomona** Students, under the guidance of Dr. Sharonda Bishop, for their sustained volunteer efforts post-Covid.

The Appreciation Luncheon was not just a day of awards, but a heartfelt gathering that reflected on the incredible impact of community service and volunteerism.

We are immensely grateful to all our volunteers and partners who have joined us in this journey of hope and help. Their volunteer efforts inspire us every day to continue our mission.

Calendar of Events/ Activities

Newsletter Mailing.....June 18, 2024

Annual Meeting.....June 26, 2024

Call or email office for bold events (need volunteers)!

909-622-3806, x108;

vcoordinator@inlandvalleyhopepartners.org

www.inlandvalleyhopepartners.org

INLAND VALLEY HOPE PARTNERS

BOARD OF DIRECTORS

Board Chair
Ron Bolding
Pilgrim Place

Board Vice Chair
Dr. Donna Bernard
*Retired School
Superintendent*

Treasurer
Rev. Mike Fronk
*First Christian Church,
Pomona*

Secretary
Tony Soto
US Ecology

Members
Craig Chisolm
Divine Home Inspections

Gabriel DeLuna
Trilogy Financial

Katherine Hage
Bank of America

Dr. Massie Hazegh
State Farm

Judith B. Mussatto, OFS
Retired Bookkeeper

Dain Pankratz
Boyd Caton Group

Ehmandah Ramsey
She Stories



Who We Are ...

Celebrating over 50 years of commitment, Inland Valley Hope Partners serves over 75,000 men, women and children each year through "Our House" family residential shelter; and Rapid Re-Housing; BETA, SOVA, Claremont, San Dimas and South Pomona food pantries; and the Pomona Farmers' Market throughout 13 communities including Chino, Chino Hills, Claremont, Diamond Bar, La Verne, Montclair, Mt. Baldy, Ontario, Pomona, Rancho Cucamonga, San Dimas, Upland, and Walnut. The shelter houses five families for up to 90 days. The food pantries distribute five days worth of food per person to no and low income families. Clients may come once every 30 days. The Farmers Market operates every Saturday morning and accepts WIC and EBT cards. Begun in 1968 as the Pomona Council of Churches, today the non-profit is a collaboration of faith communities, businesses, community groups, and individuals who care about their neighbors.

Blessings ...

May marks the beginning of the government's WIC and Senior Summer Farmers' Market Nutrition Program. This innovative program supports the consumption of fresh, locally grown fruits and vegetables and encourages shopping at local farmers' markets. The program, which provides eligible recipients with a booklet of three \$10 checks for use at authorized markets, brings a big boon in attendance and sales at our Pomona Valley Certified Farmers' Market each summer. The program is a huge benefit to our low-income shoppers who can combine it with the Market Match Program to DOUBLE their purchasing power for fresh, nutritious produce at the market.



Our Pomona Valley Certified Farmers' Market is open for business every Saturday morning to ALL – not just low-income shoppers! We encourage you to check out all it has to offer! This time of year market stands are bursting with apricots, cherries, blueberries, bok choy, swiss chard, cucumbers, sweet potatoes, and many other yummy fruits and vegetables to enjoy. And the market has lots of upcoming special

events for you to look forward to! Early each July, the market celebrates our country's birthday with red, white, and blue fruit bowls. We also host a salsa contest each summer with participants using the bounty of the chili crop at the market in mid-August. For more information on these special events, visit the market on Saturday mornings and speak with Harry or Patricia.



The farmers' market takes place every Saturday (rain or shine) in the parking lot of Purpose Church (NW corner of Pearl and Garey in Pomona) from 9:00 a.m. to 1:30 p.m. We hope to see you there soon!



Blessings!

Kami Grosvenor
President/CEO

INLAND VALLEY HOPE PARTNERS

1753 N. Park Avenue,
Pomona, Ca 91768
909.622.3806
FAX 909.622.0484

info@inlandvalleyhopepartners.org
www.InlandValleyHopePartners.org

ADMINISTRATION/HOUSING
OFFICE HOURS:
Monday - Thursday 8:00 am-6:00

A Sneak Peek of Our Renovated Shelter

Many of you, our loyal supporters, are aware of the massive amount of construction and work that has occurred at the *Our House* Family Shelter over the last few years. We have torn up the parking lot to re-route the plumbing and lay new water lines for a fire sprinkler system. We've installed the overhead system to meet fire and safety codes in order to operate at an increased capacity, and finally we've given the shelter a refresh with new interior paint, flooring, windows, storage racks, curtains, and more.

We've got a few more beautification and safety projects to check off our list in the coming months, namely new gates and fencing, a revived yard, and new common area furniture, but we couldn't resist giving you a small sneak peek of the improvements that have been made at the shelter. These projects have been crucial in providing a safe and comfortable environment for the families and individuals we serve.



Clockwise from top left: The shelter interior before renovations; digging up the church parking lot to install new waste lines; installing new vinyl plank flooring; the common area of the shelter after new paint and flooring.

We look forward to hosting an Open House in the Fall/Winter to show off the shelter in person. Thank you for your support during this process.

Join Us for the Annual Meeting

All supporters are invited to join Inland Valley Hope Partners for this year's Annual Meeting on Wednesday, June 26th at 4 p.m. The meeting will take place in the Fellowship Hall at First Christian Church Pomona (1751 N. Park Ave.) During the meeting, Hope Partners will elect the new Board of Director officers and members as well as give a state of the agency. Please RSVP to Kami Grosvenor at 909-622-3806, x101 or kamig@inlandvalleyhopepartners.org.

INLAND VALLEY HOPE PARTNERS

STAFF

President/CEO

Kami Grosvenor, x101

[kamig@](mailto:kamig@inlandvalleyhopepartners.org)

inlandvalleyhopepartners.org

Office/Fiscal Administrator

Yvonne West, x102

[yvonnew@](mailto:yvonnew@inlandvalleyhopepartners.org)

inlandvalleyhopepartners.org

Fiscal/Grants Administration Assistant

Bryce Gardner, x112

[bryceg@](mailto:bryceg@inlandvalleyhopepartners.org)

inlandvalleyhopepartners.org

Director of Development & Communication

Misa Martinez, x105

[misam@](mailto:misam@inlandvalleyhopepartners.org)

inlandvalleyhopepartners.org

Development & Volunteer Relations Associate

Cirenia Cuevas (CC), x108

[cc@](mailto:cc@inlandvalleyhopepartners.org)

inlandvalleyhopepartners.org

Grant Writer

Kay Brand, x104

[kayb@](mailto:kayb@inlandvalleyhopepartners.org)

inlandvalleyhopepartners.org

Case Manager

Karen Abram, x106

[karena@](mailto:karena@inlandvalleyhopepartners.org)

inlandvalleyhopepartners.org

Case Manager

Kevin Davison, x204

[kevind@](mailto:kevind@inlandvalleyhopepartners.org)

inlandvalleyhopepartners.org

Food Security Program Manager

Isaac Vega, x201

[isaacv@](mailto:isaacv@inlandvalleyhopepartners.org)

inlandvalleyhopepartners.org

Food Security Program Associate

Claudia Wheatley, x301

[claudian@](mailto:claudian@inlandvalleyhopepartners.org)

inlandvalleyhopepartners.org

Food Security Program Associate/Driver

Farmers' Market Manager (contract)

Harry Brown-Hiegel,

310-621-0336

h.brownhiegel@ca.rr.com



Get a Jump Start on Your School Supply Drive TODAY!

It may seem early to start making a call for donations of school supplies, but the start of a new school year will be here before we know it! In fact, several local school districts return to school as early as August 7th. Many families in our community are struggling. Rising rents, fuel, utilities, and food costs are impacting everyone, but studies show that high inflation hits low-income families the hardest. Your help providing local children with the basic school supplies they need to succeed is more vital than ever.

Common items needed include:

- Pens
- #2 Pencils
- Spiral Notebooks
- Folders with Pockets
- 3-Ring Binders
- Box of Crayons
- Colored Pencils
- Highlighters
- Backpacks
- Copy Paper
- Index Cards
- Loose-Leaf Notebook Paper
- Rulers
- Scissors



Employees from CliftonLarsonAllen LLP volunteer to put together backpacks filled with supplies for children as part of last year's School Supply Drive.

Help Hope Partners provide these items to the low-income children we serve by hosting a school supplies drive or simply adding a few basic back-to-school items to your own shopping list.

School supplies will be needed by mid-July, if possible, for distribution before the start of school. Donations are accepted at our administration office (1753 N. Park Ave., Pomona) from 8 a.m. to 6 p.m., Monday through Thursday. For more information, contact our Development & Communication Director, Misa Martinez, at 909-622-3806, x105 or misam@inlandvalleyhopepartners.org.

Thank you for helping us make a difference!

Other Ways to Give

Do you designate your **Ralphs rewards**? Please consider designating them to Inland Valley Hope Partners. That way you can help us feed the hungry by buying your own groceries! Simply visit www.ralphs.com. Once logged into your Ralphs account, you can search for INLAND VALLEY HOPE PARTNERS either by name or by our Non-Profit Organization number **WG044** and then click Enroll. New users will need to create an account which requires some basic information, a valid email address, and a rewards card.

Matching gifts is a form of corporate philanthropy which allows companies to match their employees' donations to nonprofits. Companies will match their employees' donations at a 1:1, 2:1, or even 3:1 ratio, effectively maximizing the impact of a single eligible donation. Your HR Dept. will typically be able to assist you access your company's matching gifts program.



A Beacon of Hope: Janet Smith “Pays It Back” at the Our House Family Shelter



Janet Smith's story is a powerful testament to the transformative impact of "Our House" Shelter and the resilience of the human spirit. In 2016, Janet arrived at our shelter as a participant, facing challenges and hardships that many of our families experience. A single senior citizen recovering from an emotional breakdown, Janet also struggled with alcoholism and substance abuse. She felt hopeless but clung to her faith, saying, "I never lost hope in the God who saved me from all my despair."

That faith proved to be her anchor. With the support, resources, and services provided by "Our House" Shelter, Janet's life transformed in ways she never imagined. Her journey from despair to renewal began with the shelter, but it didn't end there.

Janet not only overcame her personal struggles but also went on to establish her own non-profit organization dedicated to community services and advocacy for women facing similar challenges. Her mission work has taken her around the world, particularly to underprivileged villages in Africa, where she dedicates her time and resources to uplift others.

Despite her global commitments, Janet has never forgotten the miracle that the *Our House* Family Shelter brought into her life. Since completing her stay at the shelter, she has continuously paid it forward. She provides clothing, bedding, cleaning supplies, and kitchen appliances to shelter families. During every holiday and for every child's birthday at the shelter, Janet ensures they receive what they need, embodying her belief that "somebody cares for you and you are not forgotten."

Janet's unwavering dedication over the past nine years has made a lasting impact on countless lives. Her life of gratitude and service exemplifies the true spirit of giving back. We wish Janet all the best in her ongoing journey, knowing that she richly deserves every blessing.

Volunteers Needed! Help Hope Partners Serve Our Community!

Inland Valley Hope Partners is looking for dedicated volunteers to help us make a difference in our community. Whether you can give a few hours a week or more, your time and effort are invaluable.

Volunteering with us is a rewarding experience that allows you to give back, connect with others, and develop new skills. We have a variety of opportunities available, from assisting in our food pantries and organizing events to supporting our administrative tasks and various programs.

Interested? Contact our Development and Volunteer Relations Associate, Cirenia Cuevas (CC), at 909-622-3806, x108 or email cc@inlandvalleyhopepartners.org for more information.



April Donors

Partners (\$1,000.00 to \$1,000,000.00)

ACTS Thrift Store
Anonymous
The Cheeryble Foundation
Claremont Presbyterian Church
Melinda Jones
Maria Lai
Life Bible Fellowship Church
Max and Marilyn Williams

Associates (\$500.00 to \$999.99)

Linda Soucy Collins
Compassion Church of the Foothills
Gerald & Margery Goldman
Good Shepherd Lutheran Church
Richard Hamlett & Nancy Haskell
La Verne Church of Brethren
Dr. Robert Salinger
Louis & Joy Shaup
Jesse & Hope Vela

Pace Setters (\$250.00 to \$499.99)

Kathy A Beauchamp
Dr. Donna Bernard
Margaret Constantine
Gerald & Berkley Davis
Sharon Eazell
Teresita Gomez
Ward & Lois McAfee
Elizabeth Meehan
Brian Mitchell - Independent
Freight Surveys
Dain Pankratz
E. D. and Judi Ridderbusch
Eugene & Nancy Smith
Jess & Marion Swick
Karima Y Tahir
Thrivent Choice
Upland Christian Church
Gene & Yvonne West
A. Christine Willis

Contributors (\$100.00 to \$249.99)

Judith Aboufares
Robert C Benza
Denis Bertone
Patricia A. Beswick
Kevin & Sharonda Bishop
Susan Cave
Barbara Coates
Peggy Constantine
Priscilla Constantine
Charles and Margaret Davis
W. Brian Ebersole
Christine Elliott
Michael & Emily Fay
First United Methodist Church - Ontario
Susan Herndon - Signs by Susan
William Jones
George & Alice Kerner - Kerner Family Trust
Patricia Kersbergen - Marylyn Jones
Ted and Sharon Komoto
Linda & Robert Liebing
Eric Malstrom
Charlene Martin
Conrad & Barbara Nicoll
Our Lady of the Assumption Catholic Church
Ted & Lowanna Owens - Owens5 Family
Ellen Polamero
Theodore and Carol Powl
Larry & Jeanine Robertson
Rock of the Foothills Lutheran Church
Timothy and Neva Root
Eileen Senner
Leon Silberberger
John Stamp
Suzette Stetzer
Elise & Dave Tubbs
Jess and Susan Villa
Ted & Wytke Visser
Dwight Vogel

Explorers (\$50.00-\$99.99)

Carol-Lee Marshall And Ben DeWald
Wendy Bayer

Diane Deal
John Denham
Marcia Ellison
Hallie Dell Quinn Missionary Society of Primm Tabernacle A.M.E. Church
Paula Hui
Roger Johnson
Patricia Light
Marsha Madison
Mary Jean Neault and Mike Sutton
Gary Mumaw
Noel & Irma Nazareno
Timothy Nelson
Pomona Fellowship Church of the Brethren
Ms M. Eileen Prendergast
Alison J Stendahl
David Ward

Others (\$0.01- \$49.99)

Nicole Abea - Hopeless Records
Eman Abohebeish
Marilyn Brunger
Marilyn Eng
Jim and Ann Frye
Patricia Hardy
Rose Heredia
Brenda Keith
Robert and Elaine Klitgaard
Barbara MacKenzie
Laura and Sean Mulroy
Jean W Perry
Deborah Pruitt
United Way California Capital Region
Oliver Varnes Jr.
Elisabeth Walker

In Memory Of

Mary Ball Williams
By: *Elisabeth Walker*

Mary V. Ball
By: *Elisabeth Walker*

Harry Brunger
By: *Marilyn Brunger*

Tim Constantine
By: *The Cheeryble Foundation*

Maxine Denham
By: *John Denham*

Michele Duvall
By: *Eric Malstrom*

Doug MacKenzie
By: *Barbara MacKenzie*

Diann Ring
By: *Charlene Martin Jess and Marion Swick*

Carol J. Varnes
By: *Oliver Varnes*

Linda Vogel
By: *Dwight Vogel*

In Honor Of

Matt, Andrew, Susan, and Ted Komoto's Birthdays
By: *Ted and Sharon Komoto*

Mother's Day
By: *Teresita Gomez*



Thank
You!

FRANTZ CLEANERS

622-2513 • 1490 N. GAREY

Same Day Service
 ALL DRY-CLEANING DONE ON PREMISES
 Alterations • Drapery Cleaning
 Wedding Gown Specialist
10% DISCOUNT WITH COUPON

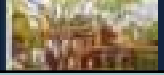


Geoff Hamill DRE #00997900
 Broker Associate, CRS, SRS, GRI, SRES, GREEN
 #1 Claremont Sales & Listings
 Top 1% Realtors in the USA
 Direct: 909.621.0500 • Geoff@GeoffHamill.com
 GeoffHamill.com • WSSIR.com
Extraordinary Representation Since 1988



Wheeler Steffen

Sotheby's INTERNATIONAL REALTY



LET'S GROW YOUR BUSINESS

Place Your Ad Here
 and Support Our Parish!

CONTACT ME
Marcia Boswell

Mboswell@4LPi.com
 (800) 950-9952 x2246

DOES YOUR NONPROFIT ORGANIZATION NEED A NEWSLETTER?

OUR COMMUNITY NEWSLETTER
 OUTRAGE SERVICE



Engaging, ad-supported print and digital newsletters to reach your community.

Visit lpicomunities.com

Scan to contact us!

Place Your Ad Here and Support our Community!

Instantly create and purchase an ad with

AD CREATOR STUDIO



lpicomunities.com/adcreator

ADT-Monitored Home Security

Get 24-Hour Protection From a Name You Can Trust

- Burglary
- Flood Detection
- Fire Safety
- Carbon Monoxide



ADT Authorized Provider

SafeStreets

833-287-3502

WE APPRECIATE OUR ADVERTISERS!

THRIVE
 LOCALLY

THE RAUCH HOUSES

at PILGRIM PLACE

Purposeful living is our core value

We are dedicated to offering a unique, safe, and nurturing environment tailored to the needs of your loved one.

Memory Care Services

Speak to an expert today!

909.399.5504

gtackoor@pilgrimplace.org | www.pilgrimplace.org

625 Mayflower Road Claremont, CA 91711 | Follow us

Certificate of Authority #226 DSS # 197607628 Dept of Public Health #950000084

SUPPORT OUR ADVERTISERS!



For ad info. call 1-800-950-9952 • www.lpicommunities.com

Inland Valley Hope Partners, Pomona, CA

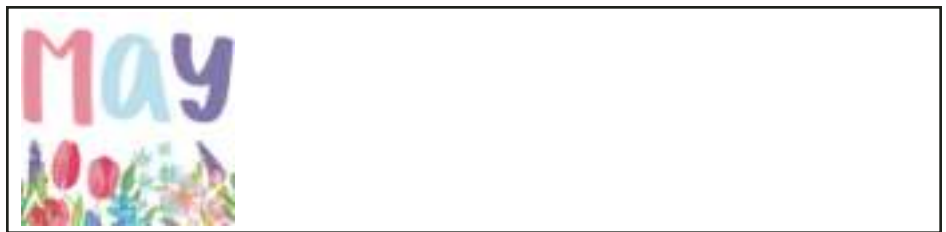
A 4C 05-1845



PO BOX 2572, Pomona, CA 91769-2572
Voice: 909.622.3806 * Fax: 909.622.0484
E-mail: info@InlandValleyHopePartners.org
Website: www.InlandValleyHopePartners.org

Return Service Requested

Non Profit Org.
U.S. Postage
PAID
Permit No. 134
San Dimas, CA
91773



Gift-In-Kind Donations for April

Admin/Our House

Ancho's Southwest Grill and Bar
Autry Museum of the American West
Donna Bernard and John Townswick
Bowers Museum
Cal Poly Pomona - MHR Students
California Botanic Gardens
California Surf Museum
Cheesecake Factory
Peggy Constantine
DoubleTree by Hilton Claremont
First Christian Church - Pomona
Holy Name of Mary Church and
School
Inland Valley Hope Partners
LA County Museum of Art
Destiny Lee
Miracle Springs Resort & Spa
Morongo Casino, Resort & Spa
Museum of Tolerance
Palm Springs Aerial Tramway
Palm Springs Air Museum

Ani Patriiayan - Western University
Roclord Studios
Rodrigo's Mexican Grill
Santa Anita Park
Sierra Lakes Golf Course
Lisa Snider
Vince's Spaghetti
Wytyske Visser

Beta

Claremont Presbyterian Church
COPIA Pomona Schools
Pilgrim Congregational Church
Pilgrim Place - Claremont
Pomona Fellowship Church of the
Brethren
Purpose Church

Claremont

City of Claremont

San Dimas

Carolyn Gomm
Compassion Church of The Foothills
House of Joy
Judith Oschsner
Peace & Carrots Community Garden
San Dimas United Methodist Church
San Dimas Senior Bingo

Sova

Donna Chadwick
Marten Transport
St. Mary's Montessori School
Superior Grocers
Susan Frances
William Noble
Yung-Ching Chen

Evergreen

Community Partners 4 Innovation