

Hope Partners Opens New Food Pantry

We have an exciting update: Hope Partners has a new pantry satellite center in South Pomona! In collaboration with our friends at **Community Partners 4 Innovation**, we present the **Evergreen Market Pantry** located at Lopez Urban Farm (1034 W. Mission Blvd., Pomona). This pantry will be open Tuesdays from 9 a.m. – 2:30 p.m. and replaces our former UrbanMission pantry that sadly closed last summer when that property was sold. Families that come to the Evergreen Market will also receive freshly harvested produce from the on-site Lopez Urban Farm! We are so excited to be back in the neighborhood and able to serve the many families and seniors in need of our emergency food assistance.

There have also been recent adjustments to some of our pantry locations' days and hours. We would like to take this opportunity to share our current hours of operation:

<u>Location</u>	<u>Address</u>	<u>Days/Hours</u>
Sova Program Center	904 E. California Street Ontario (Corner of Mission & Bon View)	Monday – Thursday 9:00 a.m. – 3:00 p.m.
Beta Program Center	209 W. Pearl, Ste 103 Pomona (Corner of Garey & Pearl)	Monday, Wednesday & Thursday 9:00 a.m. – 2:30 p.m.
San Dimas Satellite Center	110 E. Third Street San Dimas (3 blocks north of Bonita)	Mon, Wed & the 2nd and 4th Friday 2:00 – 4:00 p.m.
Claremont Satellite Center	660 N. Mountain Ave. Claremont (Corner of Harrison & Mtn.)	Tuesday 9:00 a.m. – 4:00 p.m.
Evergreen Market Center	1034 W Mission Blvd. Pomona (by Lopez Elementary School)	Tuesday 9:00 a.m. – 2:30 p.m.
Upland Distribution Center	814 Alpine St. Upland (Corner of Alpine & San Antonio)	Every 3rd Wednesday 5:30 – 7:30 p.m.
Chino Distribution Center	5581 Daniels St., Unit F Chino (Inside the Komar Business Park)	Every 3rd Saturday 10:00 a.m. – 12:00 p.m.



Stay tuned for info on the Evergreen Market Pantry's ribbon-cutting in the near future!



Calendar of Events/ Activities

Farmers' Market.....*Every Saturday*
Golf Classic.....*May 9, 2023*
Annual Meeting.....*June 28, 2023*

Call or email office for bold events (need volunteers)!
 909-622-3806, x108;

vcoordinator@inlandvalleyhopepartners.org

www.inlandvalleyhopepartners.org

INLAND VALLEY HOPE PARTNERS

BOARD OF DIRECTORS

Board Chair
Ron Bolding
Pilgrim Place

Board Vice Chair
Dr. Donna Bernard
Retired School Superintendent

Treasurer
Rev. Mike Fronk
First Christian Church, Pomona

Secretary
Tony Soto
US Ecology

Immediate Past Chair
Mark Ramsey
Bank of America

Members
Craig Chisolm
Divine Home Inspections

Gabriel DeLuna
Trilogy Financial

Katherine Hage
Bank of America

Dr. Massie Hazegh
State Farm

Judith B. Mussatto, OFS
Retired Bookkeeper

Dain Pankratz
Boyd Caton Group

Ehmandah Ramsey
She Stories



Who We Are ...

Celebrating over 50 years of commitment, Inland Valley Hope Partners serves over 75,000 men, women and children each year through "Our House" family residential shelter; and Rapid Re-Housing; BETA, SOVA, Claremont, San Dimas and South Pomona food pantries; and the Pomona Farmers' Market throughout 13 communities including Chino, Chino Hills, Claremont, Diamond Bar, La Verne, Montclair, Mt. Baldy, Ontario, Pomona, Rancho Cucamonga, San Dimas, Upland, and Walnut. The shelter houses five families for up to 90 days. The food pantries distribute five days worth of food per person to no and low income families. Clients may come once every 30 days. The Farmers Market operates every Saturday morning and accepts WIC and EBT cards. Begun in 1968 as the Pomona Council of Churches, today the non-profit is a collaboration of faith communities, businesses, community groups, and individuals who care about their neighbors.

Blessings

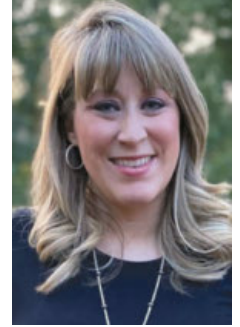
Happy Spring! Hope Partners has welcomed several new members to our team over the last year. Allow me to introduce them to you:



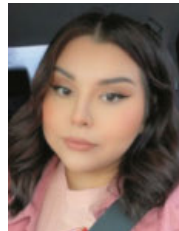
Ehmandah Ramsey, Board Member – Ehmandah has worked to cultivate spiritual growth and wellness in the community for more than 15 years.

Previously serving as a spiritual care provider for youth with trauma and mental illness, today

Ehmandah focuses on teaching women to connect with their inner self to transform their life and career. She is a mother, entrepreneur, Life Coach, Speaker, Founder of SheStories, Host of Hey Suga Podcast and serves as Co-Pastor of the E-Church.



Gabriel DeLuna, Board Member – Gabriel is no stranger to Hope Partners as he has served as a member of our Finance Committee for nearly a decade. Gabriel brings critical knowledge from his position as a Wealth Advisor with Trilogy Financial to his roles with Hope Partners. He is a UC Riverside Alumnus and father of three. In his free time, he enjoys travel, artwork and the culinary arts with his family. He also serves as an ambassador with the Covina Chamber of Commerce.



Alissa Martinez, Housing Coordinator – Alissa was introduced to Hope Partners through a county workforce training program and instantly knew this was an organization she wanted to be a part of. Alissa was born and raised in Pomona and is a parent of two boys. She enjoys doing activities with her family such as hiking and painting. Alissa says she is excited to be a part of this team and looks forward to working with our supporters, volunteers, and staff to achieve our mission.



Bryce Gardner, Fiscal Assistant – Bryce is the newest member of our team. He is currently finishing his general studies at Chaffey College and plans to major in chemistry to pursue a career in chemical engineering or pharmaceuticals. A native of Rancho Cucamonga, he recently returned from serving a mission with his church. His interests include playing soccer or pickleball as well as videogaming. He also says that although he often looks tired, he is very happy to be with us at Inland Valley Hope Partners.

We are very blessed to have these wonderful people join our board and staff. Please help us make them feel welcome!

Blessings!

Kami Grosvenor
President/CEO

INLAND VALLEY HOPE PARTNERS

1753 N. Park Avenue,
Pomona, Ca 91768
909.622.3806

FAX 909.622.0484
info@inlandvalleyhopepartners.org
www.InlandValleyHopePartners.org

ADMINISTRATION/HOUSING
OFFICE HOURS:
Monday - Thursday 8:00 am-6:00 pm

BIG Glean Recovers Citrus for the Hungry

Inland Valley Hope Partners recently had a successful volunteer event in the city of Rancho Cucamonga that left us feeling incredibly grateful and inspired. **With the help of 63 dedicated volunteers, we were able to pick 6,180 lbs of oranges and 1,228 lbs of lemons in just two and a half hours!** What's more, the event took place at the home of one of our wonderful donors, whose generosity and support made it all possible.

Thanks to the efforts of our volunteers and the generosity of our donors, we were able to fill our seven pantries with fresh, healthy produce that will go a long way towards helping those in need. The impact of this event will be felt for weeks to come as families and individuals receive the food they need to live healthy, fulfilling lives. And to think most of this produce likely would have fallen on the ground and rotted if not for this glean. Recovering surplus produce is a great way to reduce food waste and feed our hungry neighbors.

We are incredibly grateful to everyone who made this event possible, from our generous donor to our hardworking volunteers. It is through the kindness and dedication of individuals like these that we are able to make a real difference in our community and help those who need it most.

If you are interested in volunteering with our organization or making a donation to support our work, please don't hesitate to get in touch at 909-622-3806, x108 or CC@inlandvalleyhopepartners.org. We would love to hear from you and welcome you into our community of caring, compassionate individuals who are committed to making a difference in the world.



INLAND VALLEY HOPE PARTNERS

STAFF

President/CEO

Kami Grosvenor, x101
[kamig@](mailto:kamig@inlandvalleyhopepartners.org)

inlandvalleyhopepartners.org

Office/Fiscal Administrator

Yvonne West, x102
[yvonnew@](mailto:yvonnew@inlandvalleyhopepartners.org)

inlandvalleyhopepartners.org

Fiscal/Grants Administration Assistant

Bryce Gardner, x112
[bryceg@](mailto:bryceg@inlandvalleyhopepartners.org)

inlandvalleyhopepartners.org

Director of Development & Communication

Development & Volunteer Relations Associate

Cirenia Cuevas (CC), x108
[cc@](mailto:cc@inlandvalleyhopepartners.org)

inlandvalleyhopepartners.org

Grant Writer

Kay Brand, x104
[kayb@](mailto:kayb@inlandvalleyhopepartners.org)

inlandvalleyhopepartners.org

Case Manager

Karen Abram, x106
[karena@](mailto:karena@inlandvalleyhopepartners.org)

inlandvalleyhopepartners.org

Case Manager

Kevin Davison, x204
[kevind@](mailto:kevind@inlandvalleyhopepartners.org)

inlandvalleyhopepartners.org

Food Security Program Manager

Isaac Vega, x201
[isaacv@](mailto:isaacv@inlandvalleyhopepartners.org)

inlandvalleyhopepartners.org

Food Security Program Associate

Claudia Wheatley, x301
[claudian@](mailto:claudian@inlandvalleyhopepartners.org)

inlandvalleyhopepartners.org

Food Security Program Associate/Driver

Ron Crampton x200
[Ronc@](mailto:Ronc@inlandvalleyhopepartners.org)

inlandvalleyhopepartners.org

Farmers' Market Manager (contract)

Harry Brown-Hiegel,
310-621-0336

h.brownhiegel@ca.rr.com

Hope Partners Receives Valuable Grant Funding

Thank you 

We have so much for which to be thankful! The **Rauch Family Foundation** recently awarded Inland Valley Hope Partners with a \$100,000 grant for unrestricted general operating support. The Foundation has been very generous to our organization over the last few years, previously bestowing 5-figure grants in support of our Family Stabilization efforts including homeless prevention emergency rental assistance. We are so thankful to The Rauch Family Foundation for its support of our mission.



Final Days To Reserve Your Spot For the 2023 Golf Classic

We're in the final days leading up to our **26th Annual Golf Classic**, but it's **NOT** too late to save your spot to play! Join us for Inland Valley Hope Partners' Golf Classic to Feed the Hungry and Shelter the Homeless on **Tuesday, May 9th** at Sierra Lakes Golf Club in Fontana. **Pacific Western Bank** is once again serving as the **Title Sponsor** of this event. As always, proceeds from this year's event help Hope Partners provide food, shelter and supportive services to thousands of local children and their families.

Sponsorships and foursomes are available! Register TODAY using our secure website. For more information on the many ways you can participate in this fun annual event, access our Golf Page at www.InlandValleyHopePartners.org or contact Kami Grosvenor at 909-622-3806, x101 or Kamig@inlandvalleyhopepartners.org.

Enjoy a fun day on the course while helping a worthy cause. We hope to see you at this year's Annual Golf Classic!



Consider Getting a Jump Start on Your School Supply Drive

It may seem early to start making a call for donations of school supplies, but the start of a new school year will be here before we know it! In fact, several local school districts return to school as early as August 7th.

Many families in our community are struggling. Rising rents, fuel, utilities, and food costs are impacting everyone, but studies show that high inflation hits low-income families the hardest. Your help providing local children with the basic school supplies they need to succeed is more vital than ever. Help Hope Partners provide these items to the low-income children we serve by hosting a school supplies drive or simply adding a few basic back-to-school items to your own shopping list.



Common Items Needed Include:

- | | |
|----------------------|---------------------------|
| Pens | Backpacks |
| #2 Pencils | Copy Paper |
| Spiral Notebooks | Index Cards |
| Folders with Pockets | Loose-Leaf Notebook Paper |
| 3-Ring Binders | Rulers |
| Box of Crayons | Scissors |
| Colored Pencils | Glue Sticks/Glue Bottles |
| Planners | Pencil Case/Pouch |
| Calculators | |
| Highlighters | |

School Supplies will be needed in mid July, if possible, for distribution before the start of school. Donations are accepted in the administration office (1753 N. Park Ave., Pomona) from 8 a.m. to 6 p.m. Monday through Thursday. For more information, contact our Development & Volunteer Relations Associate Cirenia "CC" Cuevas at 909-622-3806, x108 or CC@inlandvalleyhopepartners.org.

February and March Donors

Partners (\$1,000.00 to \$1,000,000.00)

ACTS Thrift Store
 Anonymous
 Wendy Bayer
 Claremont Presbyterian Church
 Claremont United Church of Christ, Congregational
 Bruce and Laura Corigliano
 CrossPoint Christian Reformed Church
 Kristin Fossum and David Coons
 The Economy Shop, Inc.
 James and Catherine Haveman Family Foundation

Richard & Luann Jensen
 Brian & Barbara Johnson
 La Verne Church of Brethren
 Francisco Lopez
 Michael & Agnes McGaha
 Pacific Western Bank-Brea
 William Reed
 Rozina and Smith Physical Therapy, Inc.
 Louis & Joy Shaup
 The Rauch Family Foundation

Associates (\$500.00 to \$999.99)

Linda Bonn
 Linda Soucy Collins
 Robert & Karen Dalton

Gerald & Berkley Davis
 Michael & Emily Fay
 Jim & Marcia Flock
 James and Margaret Hill
 Derry Seaton and Jeanne Hamilton
 Elizabeth Ann Kerr
 Georgia Klein - Mudders
 Making A Difference (Harvey Mudd College)
 La Verne Heights Presbyterian Church
 Our Lady of the Assumption Catholic Church
 Dain Pankratz
 Peace Mennonite Fellowship
 Jeffrey Steel
 John R. Townswick

Upland Christian Church
 Jesse & Hope Vela
 Ellen Low Webster

Pace Setters (\$250.00 to \$499.99)

Claremont High School - Associated Student Body
 Mark Bailey
 Dr. Donna Bernard
 Catholic Daughters of the Americas - Regent Saint
 Madelene Sophie Margaret Velarde
 Claremont Community Church of the Nazarene
 Barbara Coates
(CONTINUED)

Thank You to Our Volunteers!



April is Volunteer Appreciation Month, and we at Inland Valley Hope Partners want you, our wonderful volunteers, to know just how much **we love and appreciate you!** With a paid staff of only 12, it is only due to the faithful support of our corps of volunteers that Hope Partners can carry out our mission to feed the hungry and shelter the homeless. When a mother comes to one of our pantries looking for food to feed her family, it is most often one of our volunteers who offer a smile and lend a helping hand. And when that mother receives fresh produce from our urban farming partnerships, it is the result of the many volunteers who planted, tended and harvested that crop.

Whether you serve on our board or a committee, in one of the pantries, the housing program, the farmers' market, Amy's Farm, fold newsletters, host a food drive, or any of the other ways you give of yourself to support the mission of Inland Valley Hope Partners, **THANK YOU from the bottom of our hearts!**

Other Ways to Give

Do you designate your **Ralphs rewards**? Please consider designating them to Inland Valley Hope Partners. That way you can help us feed the hungry by buying your own groceries! Simply visit www.ralphs.com. Once logged into your Ralphs account, you can search for INLAND VALLEY HOPE PARTNERS either by name or by our Non-Profit Organization number **WG044** and then click Enroll. New users will need to create an account which requires some basic information, a valid email address, and a rewards card.

Matching gifts is a form of corporate philanthropy which allows companies to match their employees' donations to nonprofits. Companies will match their employees' donations at a 1:1, 2:1, or even 3:1 ratio, effectively maximizing the impact of a single eligible donation. Your HR Dept. will typically be able to assist you access your company's matching gifts program.



February and March Donors

In Memory Of

Bill Hall

By: *Helen Marie Hall*

Bob Vance

By: *Louis & Joy Shaup*

Carol J. Varnes

By: *Oliver Varnes*

Charlotte Jacobs

By: *Louis & Joy Shaup*

Chris Hartmire

By: *John & Brenda Hill*

Daniel Morehouse

By: *Kimberly Comer*

Darla Nelson

By: *Barbara Nelson*

Doug MacKenzie

By: *Barbara MacKenzie*

Harry Brunger

By: *Marilyn Brunger*

Larry Deal's Birthday

By: *Diane Deal*

Margaret Craig

By: *Ellen Low Webster*

Mary Ball Williams

By: *Elisabeth Walker*

Mary V. Ball

By: *Elisabeth Walker*

Maxine Denham

By: *John Denham*

Officer Daniel Tim Fraembs

By: *Dorothy Fraembs*

In Honor Of

Hope Partners' Success

By: *The Economy Shop*

Pace Setters (\$250.00 to \$499.99)

(CONTINUED)

Ben and Diane Cooley

James Eagon

Sharon Eazell

First Presbyterian Church of Upland

Grand Baliwick of the Scots Kengraphics

Doug & Judy Lewis

Brian Mitchell - Independent Freight Surveys

Northminster Presbyterian Church

Barbara Patch

Ellen Polamero

Pomona Fellowship Church of the Brethren ProvisionBridge

E. D. and Judi Ridderbusch

Rock of the Foothills Lutheran Church

Dr. Loren Sanchez

Tony Soto

Kathleen Ann Steinle

Jess & Marion Swick

Ted & Wytske Visser

Westminster Presbyterian Church

Contributors (\$100.00 to 249.99)

Judith Aboufares

Kathy A Beauchamp

Robert C Benza

Denis Bertone

Patricia A. Beswick

Kevin & Sharonda Bishop

Rick & Jenifer Braun

Susan Cave

Kimberly Comer

Peggy Constantine

Priscilla Constantine

Diane Deal

John Denham

Ruth Duck

James Dwyer

W. Brian Ebersole

Christine Elliott

Eugenia M Elliott

Marcia Ellison

Carol Fishburn

Fontana Recycling Center

Dorothy Fraembs

Good Shepherd Lutheran Church

Helen Marie Hall

Patricia Hardy

Susan Herndon - Signs by Susan

John & Brenda Hill

John A. Howell

Paula Hui

Roger Johnson

William Jones

James A Keith

George & Alice Kerner - Kerner Family Trust

Patricia Kersbergen and Marylyn Jones

Linda & Robert Liebing

Patricia Light

Dieter & Monika Lodder

Barbara Mensendiek

Mary Jean Neault and Mike Sutton

Noel & Irma Nazareno

Richard & Elaine Newton

Bette Nichka

Ms M. Eileen Prendergast

Deborah Pruitt

Larry & Jeanine Robertson

Timothy and Neva Root

Andreas & Colleen Salomon

Eileen Senner

Leon Silberberger

George & Janice Spicer

John Stamp

Suzette Stetzer

Mrs. Karen Stevens

James and Nancy Taylor

Keith and Linda Tennis

Elise & Dave Tubbs

Keith and Sandra Tygum

Janet K Vandevender

Jess and Susan Villa

David Ward

Max and Marilyn Williams

Explorers (\$50.00-99.99)

Nicole Abea - Hopeless Records

Eman Abohebeish

Ken & Telma Bailey

Jeanne and Johny Berrong-Huber

Sidney & Helene Blumner

Scott & Maria Duncan

Janet Edgar

Elavon, Inc.

Annamarie Espinosa

Kenneth Frank

Revs. Michael & Julie Fronk

R. Lewis Fry

Jim and Ann Frye

Jane Harmes

Robert & Mary

Pat Hauducoeur

Lucille Terry Hobart

John Howland

Diamond Bar Lions Lorbeer Leo Club

Barbara Lotz

Deborah & Philip McKean

Linda Moore

Laura and Sean Mulroy

Barbara Nelson

David & Ann Nemer

Joan N. Stock

The Kroger Co.

Oliver Varnes Jr.

Elisabeth Walker

Lois F Williams

Others (\$0.01- 49.99)

Marilyn Brunger

Marilyn Eng

Andrew and Lynda Foster

Jill Hartley Fulton

Jane Griffith

David Lutz

Barbara MacKenzie

George and Marian Reeley

Lynn N. Rhodes

Yoel Silashi Self

Patrick Smith - Patrick Smith

Consulting

United Church of Christ -

Youth - Diamond Bar

Mina Yaghoubi

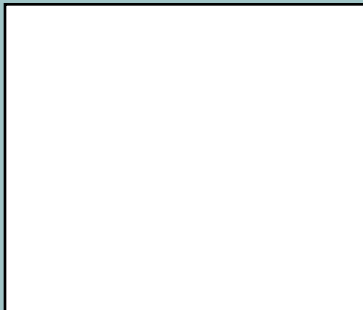
Jeff Young

FRANTZ CLEANERS

622-2513 • 1490 N. GAREY

Same Day Service
 ALL DRY-CLEANING DONE ON PREMISES
 Alterations • Drapery Cleaning
 Wedding Gown Specialist
10% DISCOUNT WITH COUPON

SUPPORT OUR ADVERTISERS!



LET'S GROW YOUR BUSINESS

Advertise in our Newsletter!

CONTACT ME
Victoria Quinn

vquinn@4LPi.com

(800) 950-9952 x2602



Geoff Hamill DRE #00997900
 Broker Associate, CRS, SRS, GRI, SRES, GREEN
 #1 Claremont Sales & Listings
 Top 1% Realtors in the USA
 Direct: 909.621.0500 • Geoff@GeoffHamill.com
 GeoffHamill.com • WSSIR.com
Extraordinary Representation Since 1988



WE'RE HIRING!
AD SALES EXECUTIVES
 BE YOURSELF.
 BRING YOUR PASSION.
 WORK WITH PURPOSE.

- Paid training • Some travel
- Work-life balance
- Full-Time with benefits
- Serve your community



Contact us at
 careers@4lpi.com or
 www.4lpi.com/careers

Place Your Ad Here and Support our Community!

Instantly create and purchase an ad with

AD CREATOR STUDIO



lpicommunities.com/adcreator

ADT-Monitored Home Security

Get 24-Hour Protection From a Name You Can Trust

- Burglary • Flood Detection
- Fire Safety • Carbon Monoxide

ADT Authorized Provider | SafeStreets | **833-287-3502**

CONSTRUCTION SERVICES

- ✓ Room Additions
- ✓ Electrical
- ✓ Paint
- ✓ Tile work
- ✓ Drywall
- ✓ Plumbing
- ✓ Windows
- ✓ Roofing
- ✓ Demolition
- ✓ Kitchen & Bathroom
- ✓ Remodel

CALL
 (626) 977 8707
 (323) 921 4842

FREE ESTIMATES ESTIMADOS GRATIS

THRIVE
 LOCALLY

MEMORY CARE at The Rauch Houses PILGRIM PLACE

Offering a safe comfortable family atmosphere and an experienced compassionate team of providers who specialize in Alzheimer/dementia care.

Rosaline Harris, MSG, CDP, CMDCP (909) 399-5575

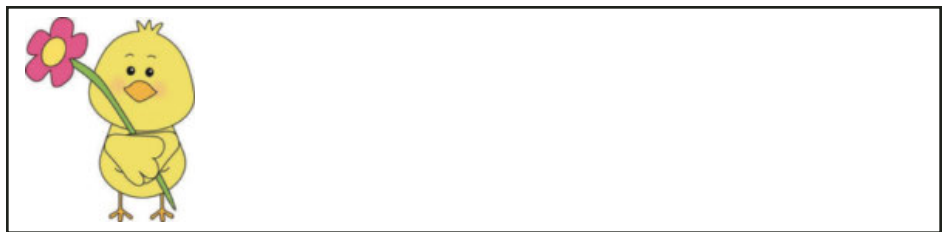
Pilgrim Place - 625 Mayflower Rd., Claremont CA 91711
 Cert. of Authority #226 DSS #197607628 pilgrimplace.org



PO BOX 2572, Pomona, CA 91769-2572
 Voice: 909.622.3806 * Fax: 909.622.0484
 E-mail: info@InlandValleyHopePartners.org
 Website: www.InlandValleyHopePartners.org

Return Service Requested

Non Profit Org.
 U.S. Postage
 PAID
 Permit No. 134
 San Dimas, CA
 91773



Gift-In-Kind Donations for February and March

Admin/Our House

Bank of America - La Verne
 Charles Cable
 Chiraq Patel
 Christina Held - Diamond Bar
 UCC Youth
 Clear Essence Cosmetics
 First Christian Church -
 Pomona
 Holy Name of Mary School
 Inter Valley Health Plan
 Janet Simmons
 Kiwanis Club of Claremont

Beta

Church Of Jesus Christ of
 Latter Day Saints Walnut
 Creek Ward
 Claremont United Methodist
 Church
 Federated Women's Club
 East Valley

Food Recovery Network
 Pomona College
 Good Shepherd Lutheran
 Church
 Kathy Duramus
 La Verne Church of the
 Brethren
 Lions Club Diamond Bar
 Marta Bonnin
 Monte Vista Unitarian
 Universalist Congregation
 Pilgrim Place Claremont
 Pomona Fellowship Church
 of the Brethren
 Purpose Church
 Rita Bramhall
 Tri City Mental Health

Claremont

City of Claremont
 Claremont Presbyterian
 Church

Good Shepherd Lutheran
 Church

San Dimas

Carolyn Gomm
 Church of Jesus Christ of
 Latter Day Saints
 Claremont Community
 Church
 Debbie Malouf
 House of Joy
 Justice Family
 San Dimas United Methodist
 Church
 San Dimas Senior Bingo
 Shirley Ford

Sova

Albertson's Supermarket
 Amy's Farm
 Cabral Trucking
 Carlos Ferreina

Clear Essence Cosmetics
 D. Chadwick
 Evangelical Free Church of
 Diamond Bar
 James & Katilyn
 Kaiser Permanente Ontario
 Campus
 Life Bible Fellowship Church
 Stork Elementary School
 Torn & Glasser Inc
 Treehouse Foods
 US Forestry Ontario Cache
 Willie Walker

Evergreen

Community Partners 4
 Innovation—Lopez Urban
 Farm